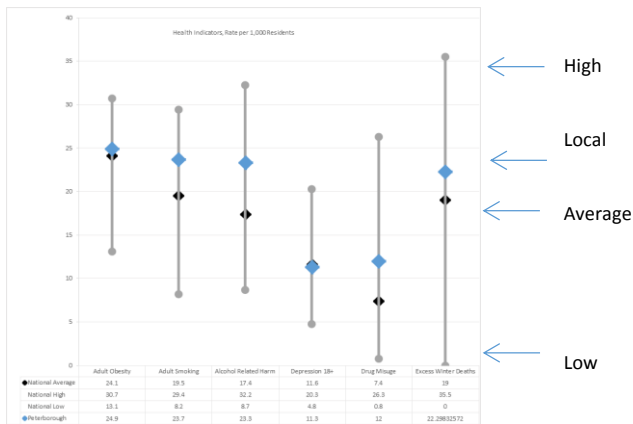


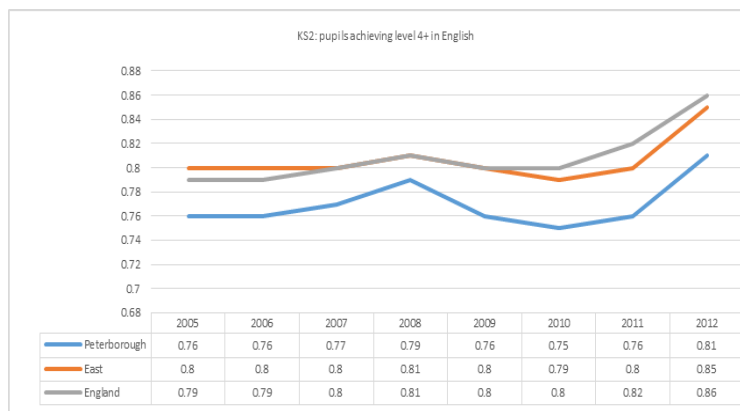
Scrutiny in a Day - Information pack guidance notes

This evidence pack has been developed to assist with the scrutiny in a day "Tackling the effects of the welfare reform" event. The information contained within has been sourced predominantly from open data with some local datasets included and has been grouped, where possible, into themes relevant to each of the five scrutiny committees. The most recently available data has been utilised where possible. This pack has been designed to allow questions to be raised as opposed to providing definitive answers. Where possible, Peterborough has been shown as a comparison to all other Local Authority areas in England, with a proportion showing a localised "drilled down" element.

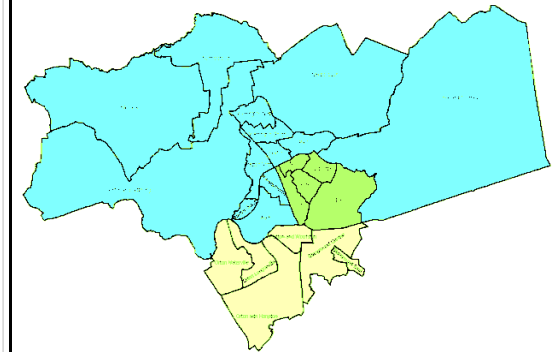
A guide to interpreting the data.



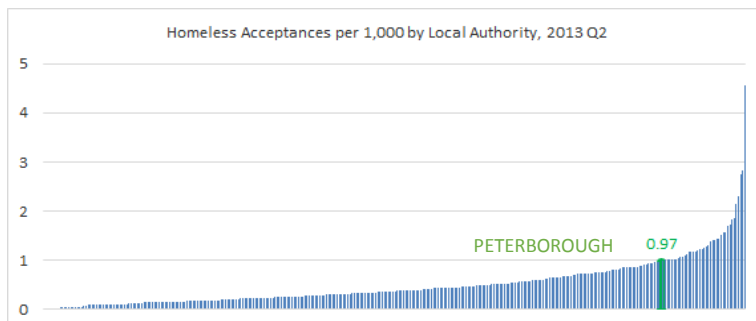
Stock Charts - are a quick way to look at a broad range of data. The maximum and minimum ranges are shown as the highest and lowest points of the line, with Peterborough featuring a blue diamond and the national average shown as a black diamond, these charts will either be shown across a time range, or across a range of themes.



Line Charts - These are utilised for displaying trends over time. The horizontal X axis shows the date range while the vertical Y axis will show either a number (i.e.. age) a rate (i.e.. per 1000 population) or a percentage (i.e.. a proportion). All Line charts in this evidence pack utilise the same colour themes. Blue = Peterborough, Orange = Eastern Region, Grey = England

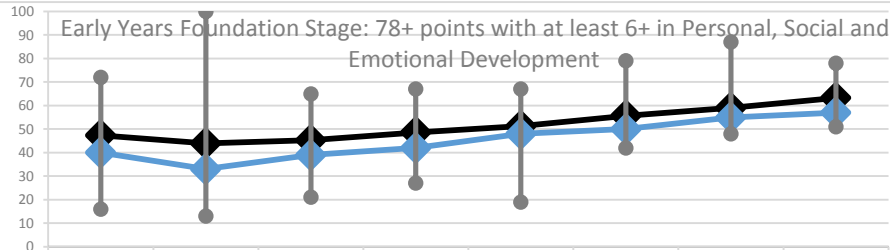


Maps - All maps that have been utilised within this evidence pack are based on ONS defined Output Areas within Peterborough Unitary Authority Ward boundaries and are shown as shaded "heat maps" based on the relative values or rates relevant to each specific area.



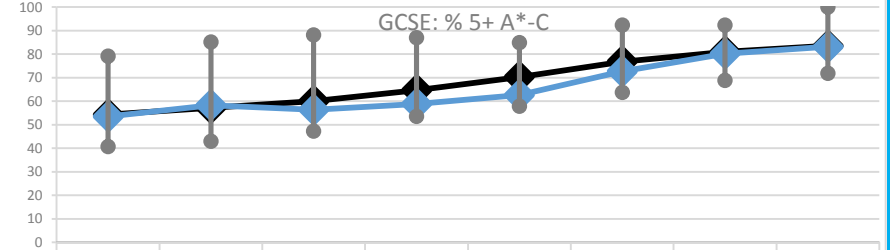
Column Charts - These charts are utilised throughout this document primarily as a way of demonstrating where Peterborough is placed in a national context. Each column represents a Local Authority in England and Wales. Peterborough will always be represented as a green column with its respective data label visible. Lowest volumes/rates will always feature to the left, where highest volumes or rates will appear to the right.

Creating Opportunities and Tackling Inequalities



	2005	2006	2007	2008	2009	2010	2011	2012
—●— Average	47.37333333	43.90604027	45.29333333	48.60666667	51.23684211	55.68421053	59	63.25
High	72	100	65	67	67	79	87	78
Low	16	13	21	27	19	42	48	51
—◆— Peterborough	40	33	39	42	48	50	55	57

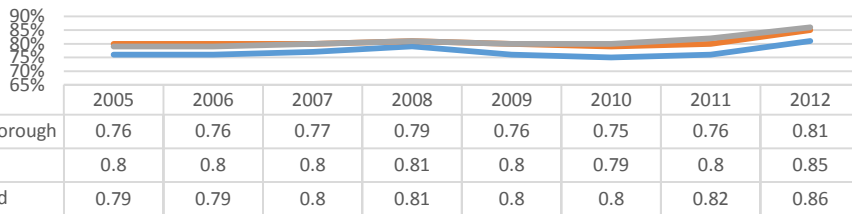
This graph shows that, regarding Early Years achievement, Peterborough and the national average are improving at a similar rate with Peterborough remaining in a relatively deficient position.



	2005	2006	2007	2008	2009	2010	2011	2012
—●— Average	54.26530612	57.15442177	60.05374156	64.66598639	70.27449664	76.81476518	81.02483221	83.5852349
High	79.2	85.2	88.2	87	84.9	92.4	92.4	100
Low	40.7	43	47.3	53.5	57.8	63.7	68.8	71.8
—◆— Peterborough	53.5	58.3	56.3	58.8	62.6	72.7	80.2	83.2

This graph shows that, despite a minor dip from 2007 to 2010, the percentage of students achieving 5+ is

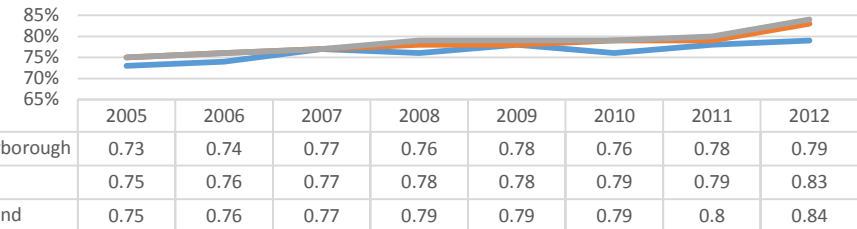
KS2: pupils achieving level 4+ in English



	2005	2006	2007	2008	2009	2010	2011	2012
—◆— Peterborough	0.76	0.76	0.77	0.79	0.76	0.75	0.76	0.81
—◆— East	0.8	0.8	0.8	0.81	0.8	0.79	0.8	0.85
—◆— England	0.79	0.79	0.8	0.81	0.8	0.8	0.82	0.86

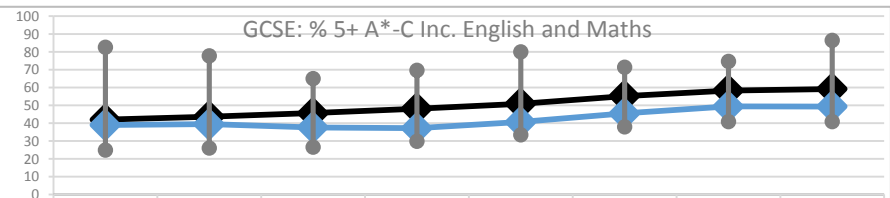
This graph shows that KS2 pupils in Peterborough have consistently trailed the region and country in English achievement since 2006.

KS2: pupils achieving level 4+ in Maths



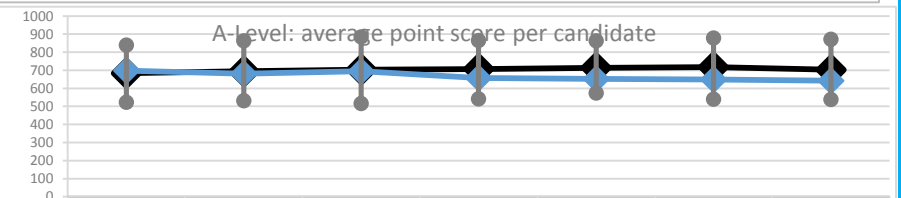
	2005	2006	2007	2008	2009	2010	2011	2012
—◆— Peterborough	0.73	0.74	0.77	0.76	0.78	0.76	0.78	0.79
—◆— East	0.75	0.76	0.77	0.78	0.78	0.79	0.79	0.83
—◆— England	0.75	0.76	0.77	0.79	0.79	0.79	0.8	0.84

This graph shows that, while Peterborough is improving in KS2 pupils achieving level 4+ in Maths, it is at a slightly slower level when compared to regional and national progress.



	2005	2006	2007	2008	2009	2010	2011	2012
—●— Average	41.98775514	33.65986395	45.60476194	48.10680272	50.92080537	55.23489933	58.29664435	61.11812081
High	82.6	77.8	65	69.6	80	71.3	74.7	86.4
Low	24.9	26.1	26.5	29.9	33.5	38	40.8	40.9
—◆— Peterborough	39	39.4	37.6	37.2	40.6	45.5	49.4	49.3

In contrast, this graph shows that Peterborough lags behind the national average regarding A*-C achievement in English and Maths in GCSE.

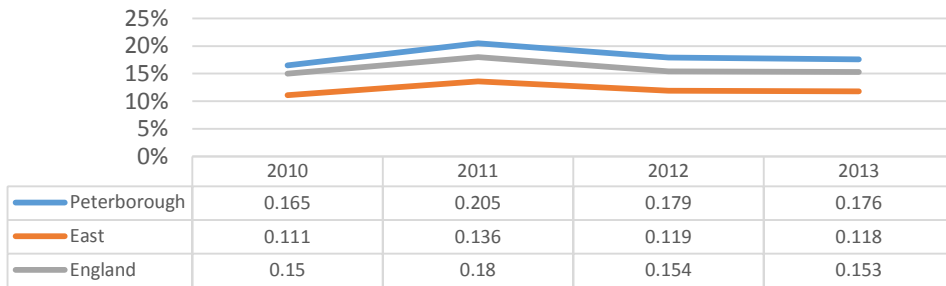


	2006	2007	2008	2009	2010	2011	2012
—●— Average	683.9468966	694.1227586	703.9806897	707.242953	714.1892617	717.6393333	702.642
High	839.2	863.2	884.8	865.5	863.8	878.1	871.2
Low	523.6	532	515.9	541.1	573.8	540.3	538.6
—◆— Peterborough	698	681	695	656.9	651.6	648.5	642.4

This graph shows that, beginning in 2009, Peterborough's average A level score per candidate has fallen below the national average.

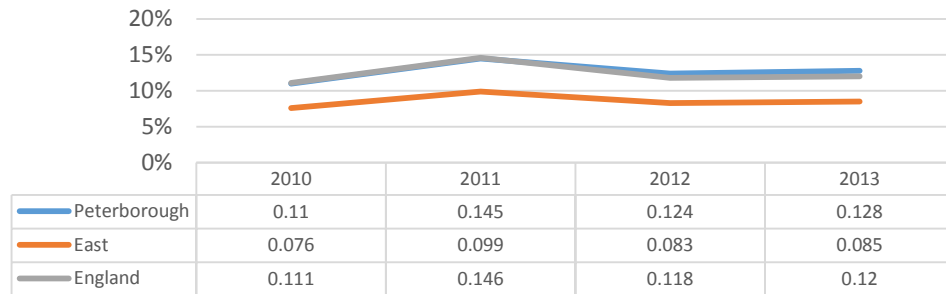
Creating Opportunities and Tackling Inequalities

FSM: primary schools

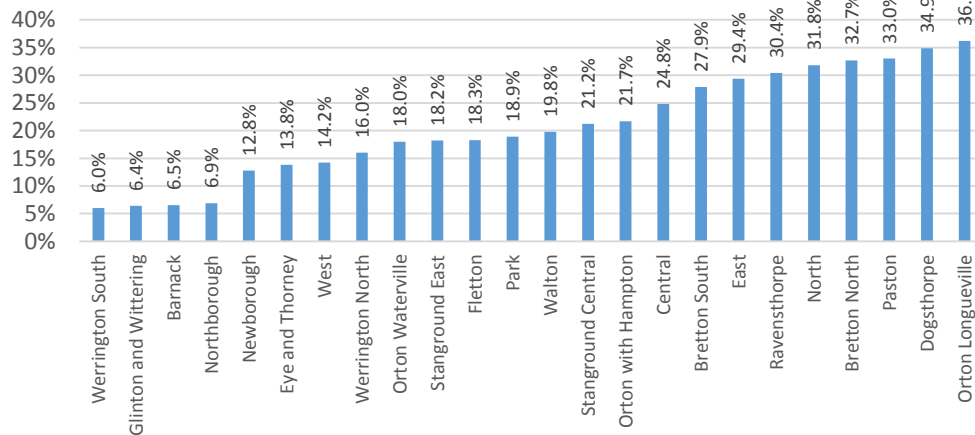


These two graphs demonstrate that Peterborough has a marginally larger percentage of pupils receiving free school meals than England and a considerably larger amount than the region.

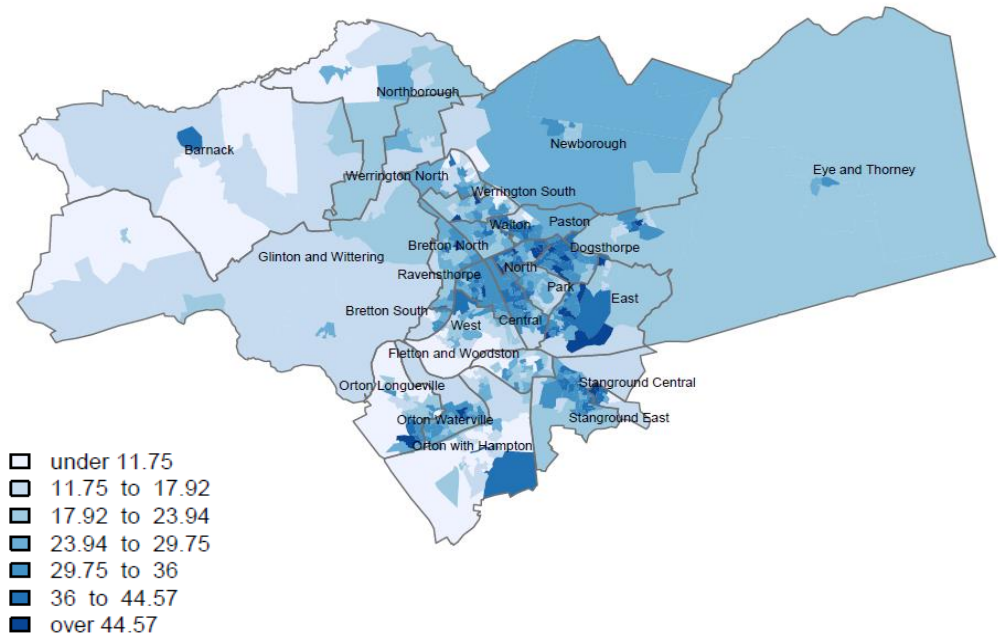
FSM: secondary schools



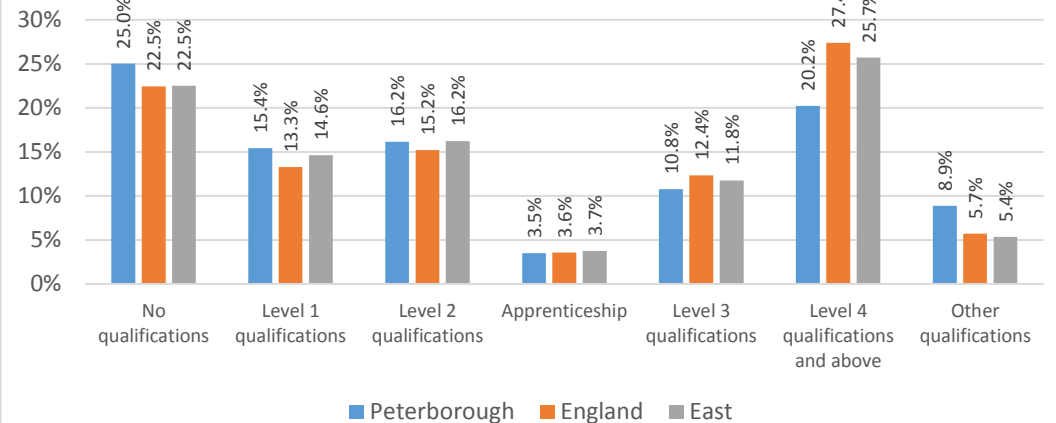
Percentage of Children Under 16 in Poverty



KS501EW0014 (No Qualifications)

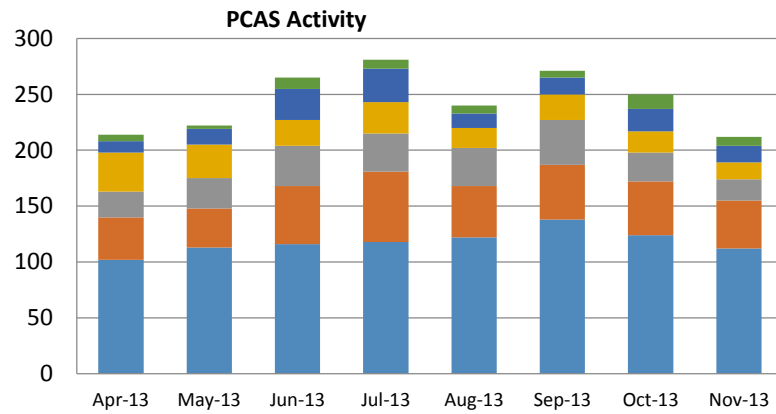


Highest Level of Qualification

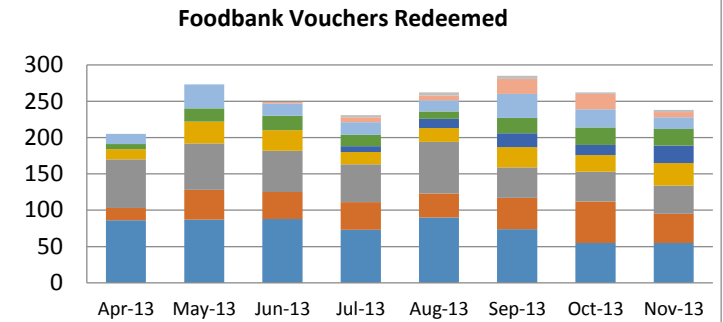


This graph shows that Peterborough has a higher percentage of people with no or other qualifications than the region and country. It also demonstrates that Peterborough has a significantly lower percentage of people with level 4 qualifications (degrees and above) than the region and country.

Creating Opportunities and Tackling Inequalities

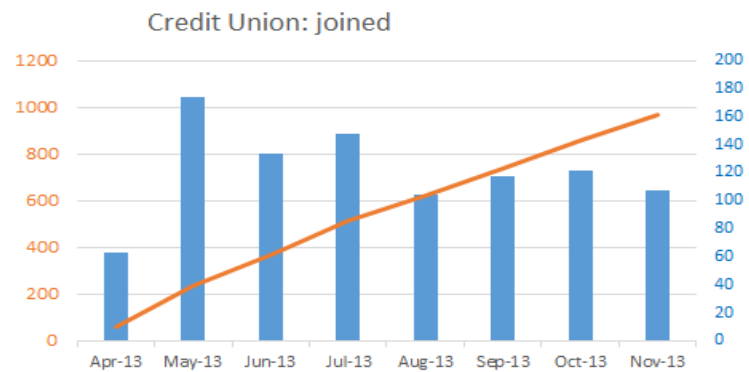


	Apr-13	May-13	Jun-13	Jul-13	Aug-13	Sep-13	Oct-13	Nov-13
Microwave Packs Issued	6	3	10	8	7	6	13	8
Wee Re-Use Vouchers	10	14	28	30	13	15	20	15
Referrals to Care Zone	35	30	23	28	18	23	19	15
Emergency Foodbox	23	27	36	34	34	40	26	19
Meter Card Vouchers Issued	38	35	52	63	46	49	48	43
Food Vouchers Issued	102	113	116	118	122	138	124	112

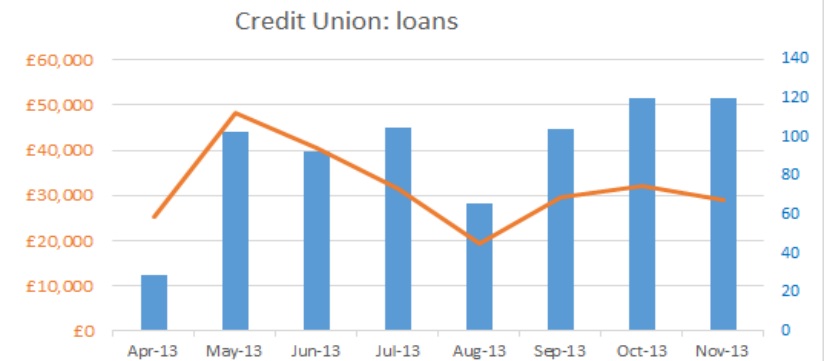


	Apr-13	May-13	Jun-13	Jul-13	Aug-13	Sep-13	Oct-13	Nov-13
313 Cromwell Road (Central ward)	0	0	0	3	4	4	2	3
Orton	0	0	2	7	7	21	21	7
Stangground	14	33	17	17	15	33	25	16
Bretton	7	18	20	16	10	21	24	23
Salvation Army (Central ward)	0	0	0	8	13	19	14	24
Paston	14	30	28	17	19	28	23	31
Westgate	67	64	57	52	71	42	41	39
Gunthorpe	17	41	37	38	33	43	57	40
Dogsthorpe	86	87	88	73	90	74	55	55

These above two graphs firstly demonstrate the activities of PCAS of which the majority activity was issuing food bank vouchers. Accordingly, the second graph shows the food banks where vouchers were redeemed, the major three location were Dogsthorpe, Gunthorpe and Westgate.



	Apr-13	May-13	Jun-13	Jul-13	Aug-13	Sep-13	Oct-13	Nov-13
Total Joined (Credit Union)	63	174	134	148	105	118	122	108
Cummulative total	63	237	371	519	624	742	864	972

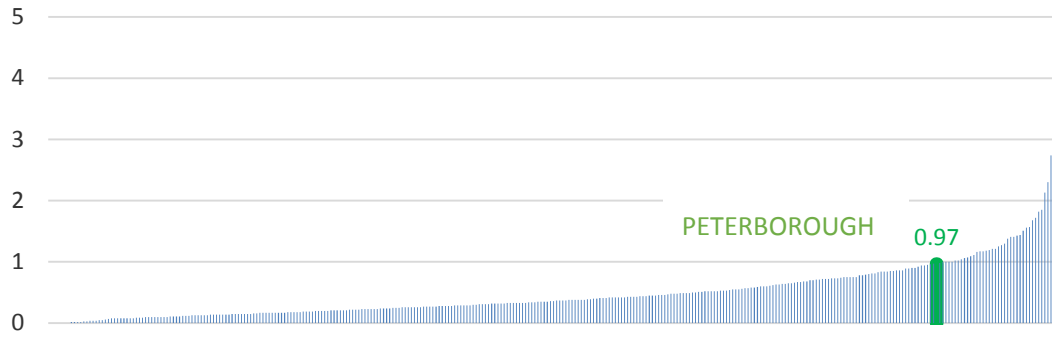


	Apr-13	May-13	Jun-13	Jul-13	Aug-13	Sep-13	Oct-13	Nov-13
Total number of loans	29	103	93	105	66	104	120	120
Total value of loans	£25,163	£48,291	£40,397	£31,502	£19,480	£29,544	£32,137	£28,945

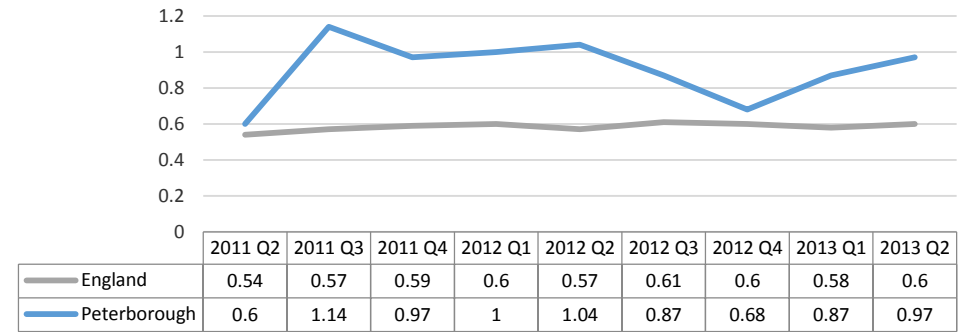
The bottom two graphs track the number of members of the credit union and the amount and value of loans approved.

Strong and Supportive Communities

Homeless Acceptances per 1,000 by Local Authority, 2013 Q2

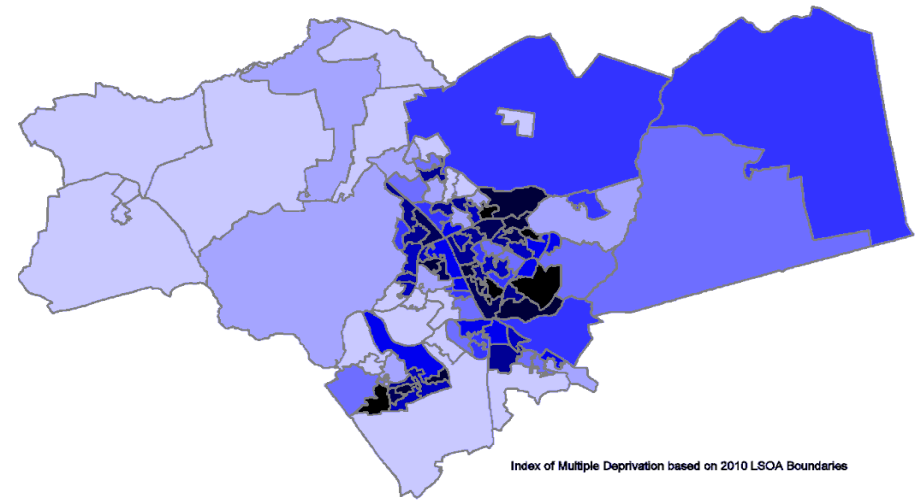
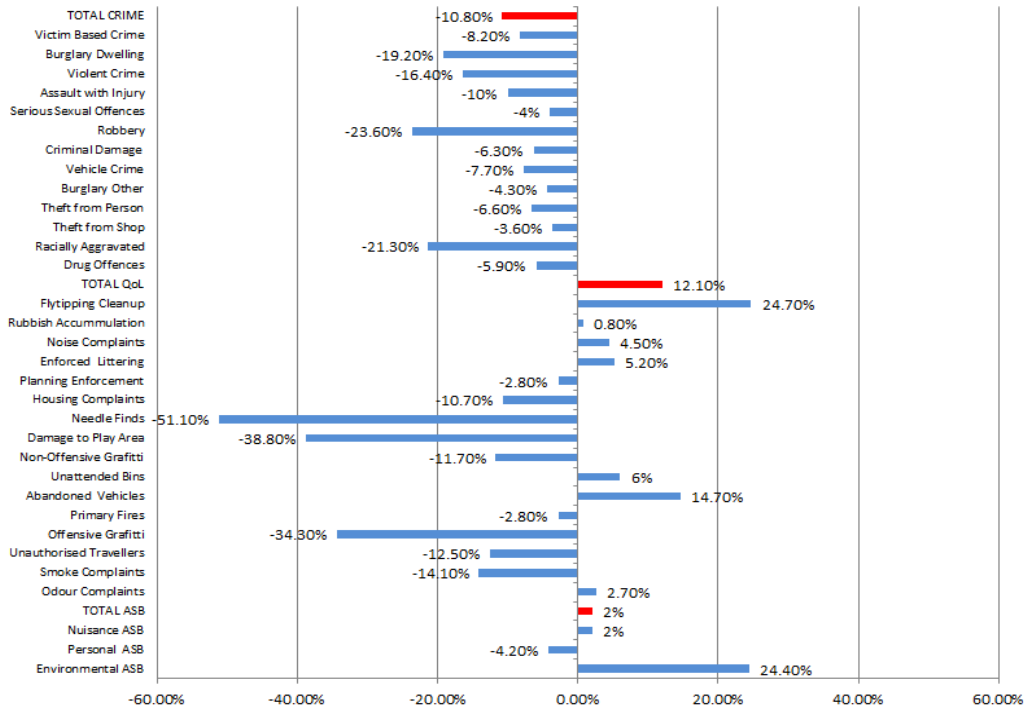


Homeless Acceptances per 1,000



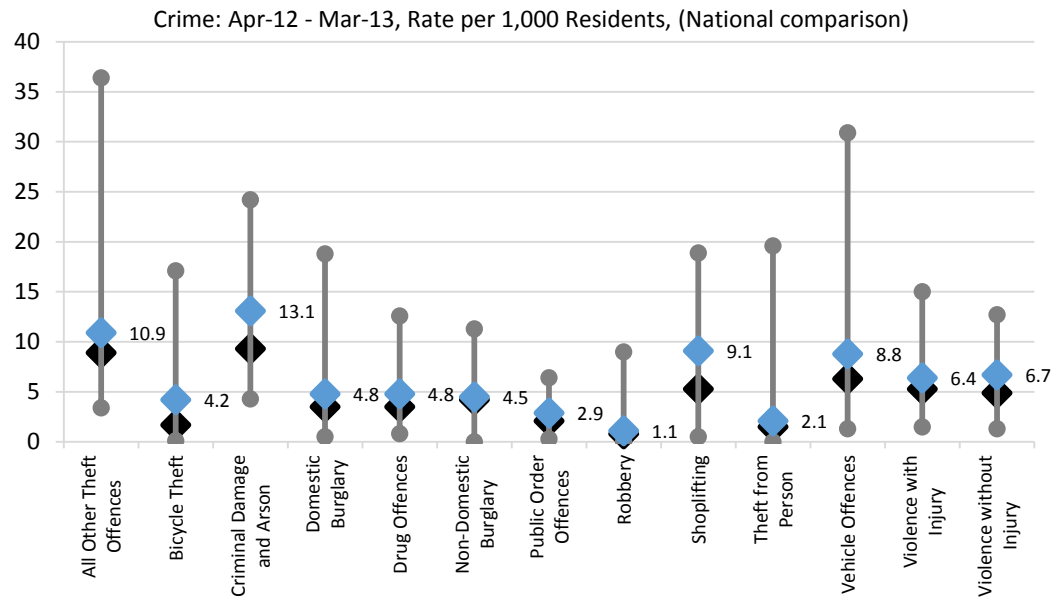
This above graphs show that Peterborough has consistently recorded homelessness acceptances as a rate per 1,000 population in excess of the country. Accordingly Peterborough lies at the higher end of all local authorities in England.

% Variation of Quality of Life factors across Peterborough from Baseline Period (Apr 2012- Mar 2013) to Current period (Dec 2012 - Nov 2013)

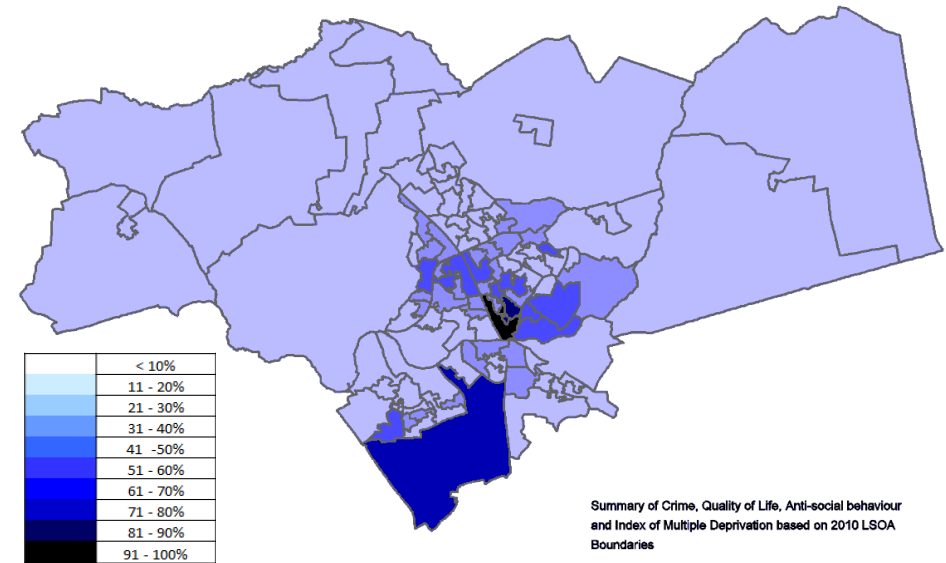


The map above shows the overall rank based on the 2010 Indices of Multiple Deprivation by LSOA - The darker the area, the more deprived it is (and the lower the rank is). When compared to 2007 IMD rankings there is little change. This is the most recent IMD data available. IMD scores will be refreshed in 2014.

Strong and Supportive Communities

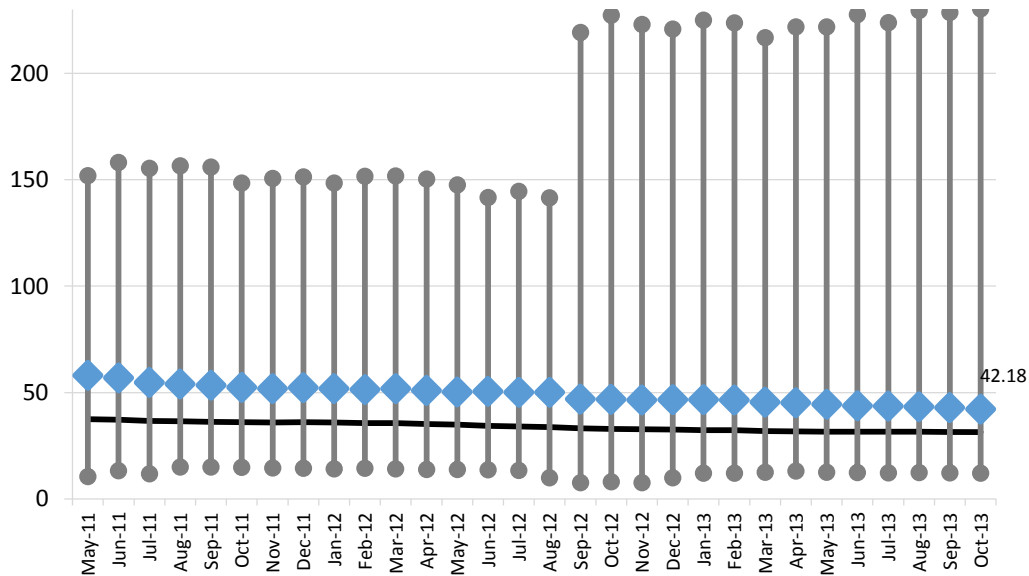


This graph plots the range of crime types per 1,000 residents with the national average and Peterborough's score superimposed. In all cases Peterborough exceeds the national average.



The map above shows the combined proportion of all Crime, Anti-social behaviour and Quality of life incidents reported to the police and local authority .

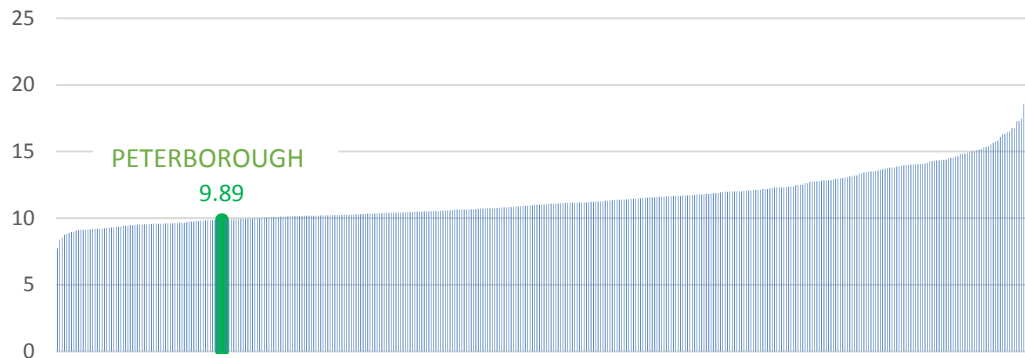
12 Month Rolling British Crime Survey - Rate per 1,000 Residents



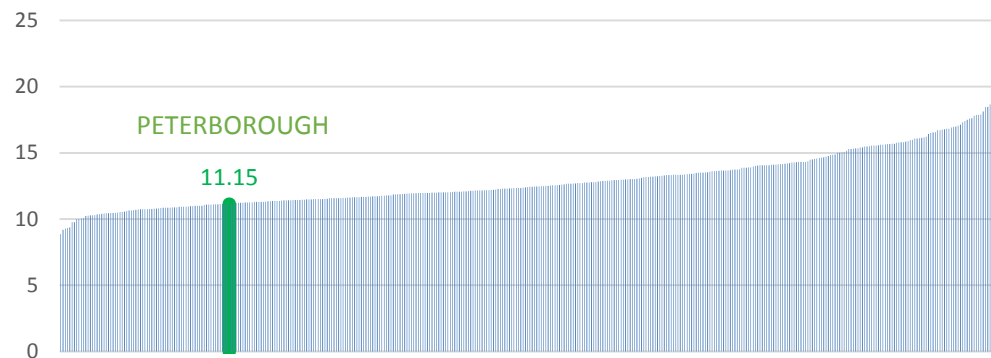
This graph to the left shows the range of Crime Survey of England and Wales scores with the national average and Peterborough superimposed. Peterborough exceeds the national average, but the gap is gradually reducing.

Sustainable Growth and Environmental Capital

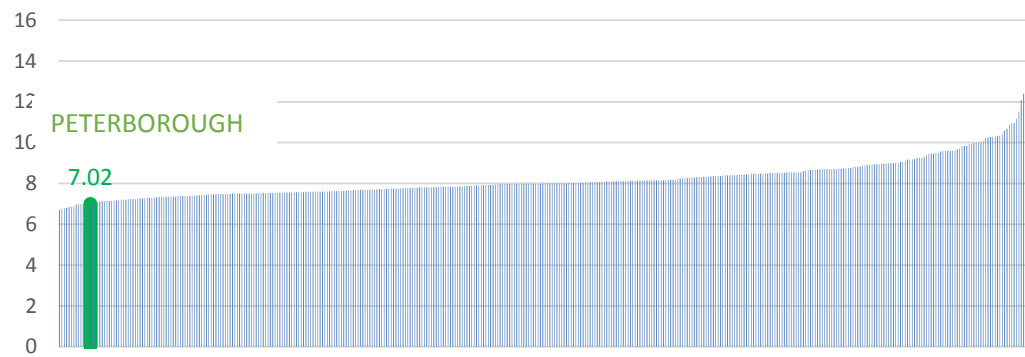
Gross Median Pay (£) by Local Authority - All Pay



Gross Median Pay (£) by Local Authority - Full-Time Pay

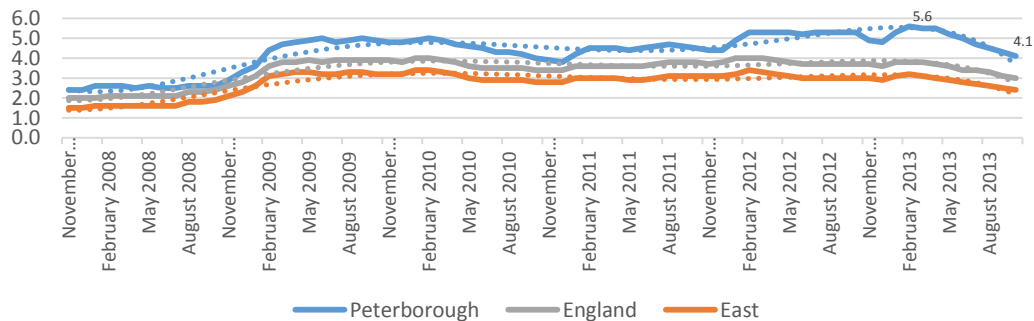


Gross Median Pay (£) by Local Authority - Part-Time Pay



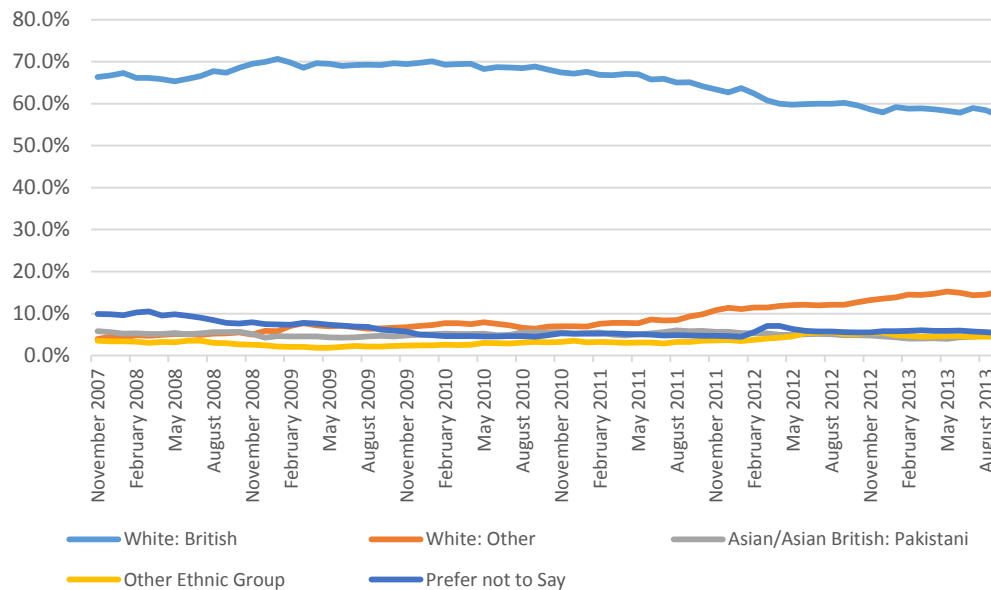
Residents of Peterborough earn comparatively less than the national median of all British local authorities. This is especially so regarding Peterborough's part-time employees whose median wage is amongst the very lowest in Britain after having experienced an annual reduction of 6.8%. This places Peterborough as 359th of 373 comparable local authorities and well within the lowest 5% in the country at 3.8%. Peterborough's part-time employees accordingly account for 22,000 (27.5%) of Peterborough's 80,000 employees.

Rate of Unemployment, Nov-07 - Oct-13



This graph shows the rate of working age unemployment. Peterborough has historically had a higher rate than the region and country although this has been exacerbated by the financial crash. However, during the last couple of months, Christmas hiring seems to have reduced the gap.

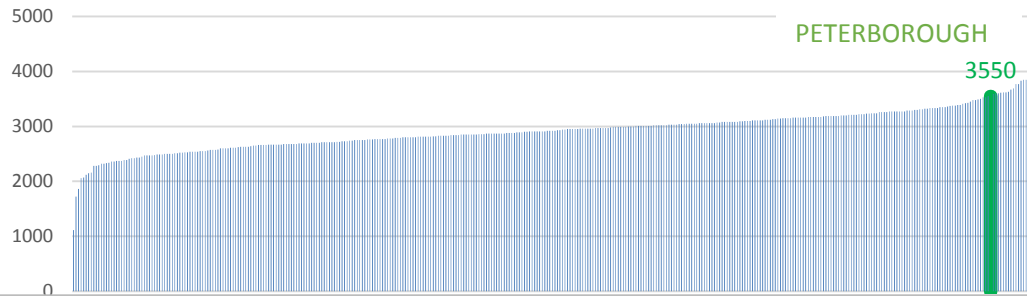
Percentage of Top 5 Ethnicities Claiming JSA, Nov-07 - Sep-13



This graph shows the proportion the top 5 ethnicities contribute to Jobseekers' claims. As would be expected, White British contribute the most although this has been in gradual decline for the past few years. White Other contribute a distant second and has been increasing for roughly the same period.

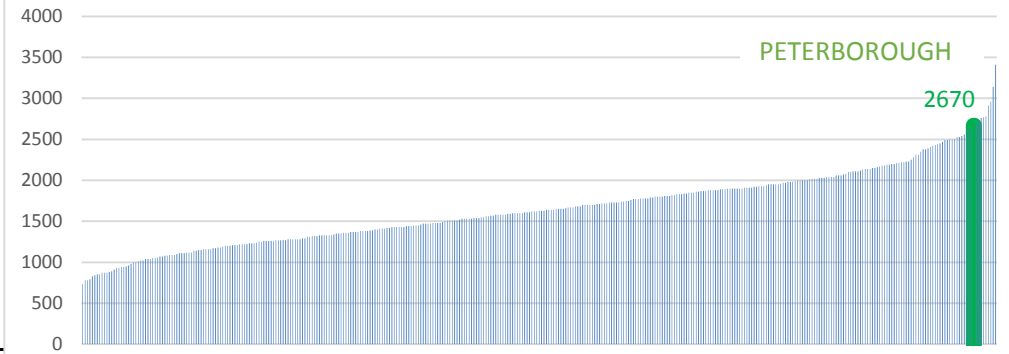
Sustainable Growth and Environmental Capital

Child Benefit reductions, Households Affected Rate per 10,000

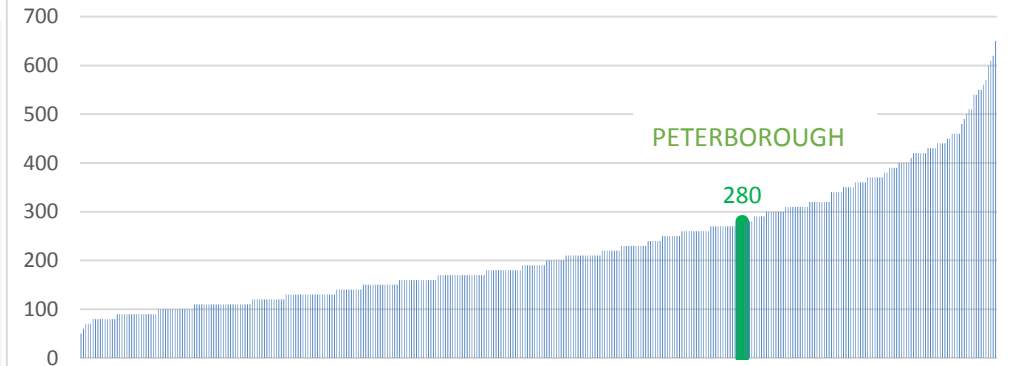


- Peterborough has amongst the highest rate of households affected by child benefit cuts in England and Wales with 3,600 (36%) per 10,000 households affected. This puts Peterborough at 365th of 379 comparable local authorities and well within the top 5% of local authorities most affected at 3.7%.
- Peterborough has amongst the highest rate of households affected by tax credit cuts in England and Wales with 2,720 (27.2%) per 10,000 households affected. This puts Peterborough at 372nd of 379 comparable local authorities and well within the top 5% of local authorities most affected at 1.8%.

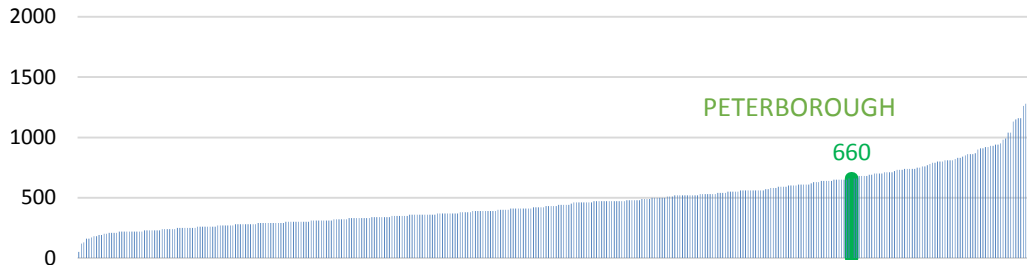
Tax Credit reductions, Households Affected Rate per 10,000



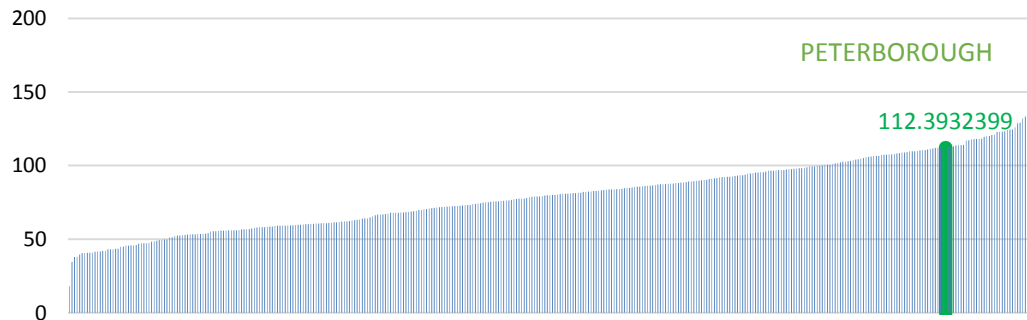
Housing Benefit reductions: Under Occupation (Bedroom Tax), Households Affected Rate per 10,000



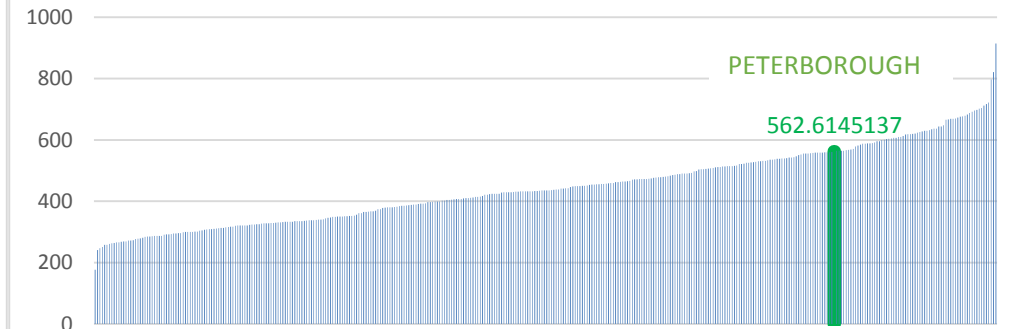
Housing Benefit reductions: Local Housing Allowance, Households Affected Rate per 10,000



1% Uprating, Financial Loss per Working Age Adult, £ per Year

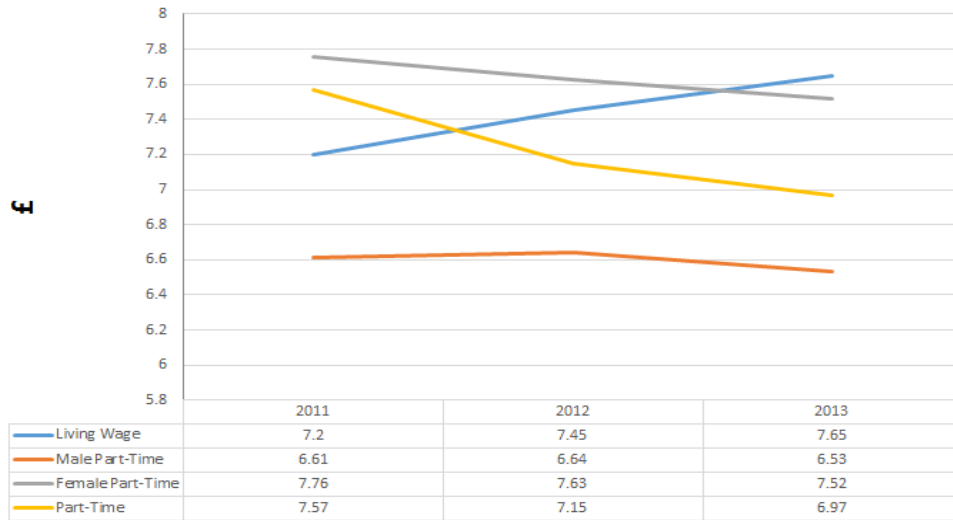


Total reductions, Financial Loss per Working Age Adult, £ per Year

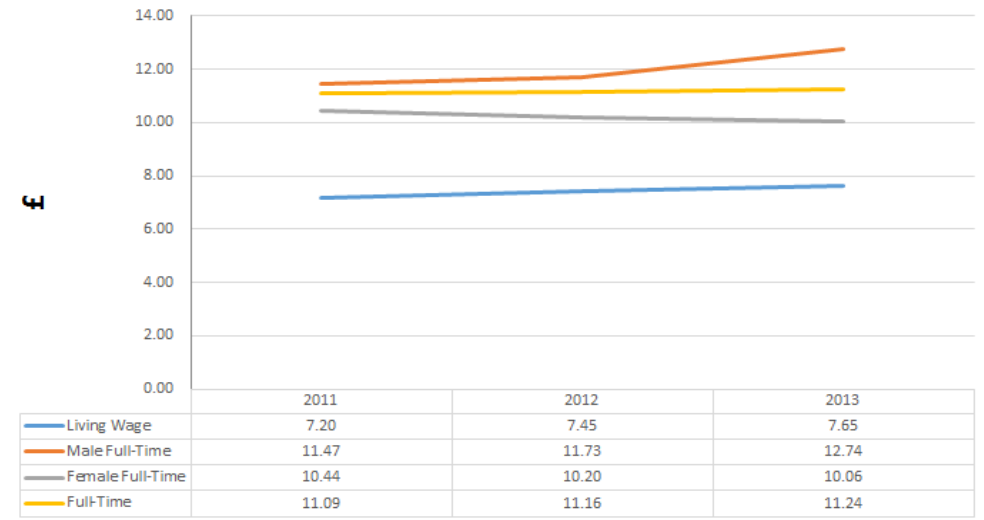


Sustainable Growth and Environmental Capital

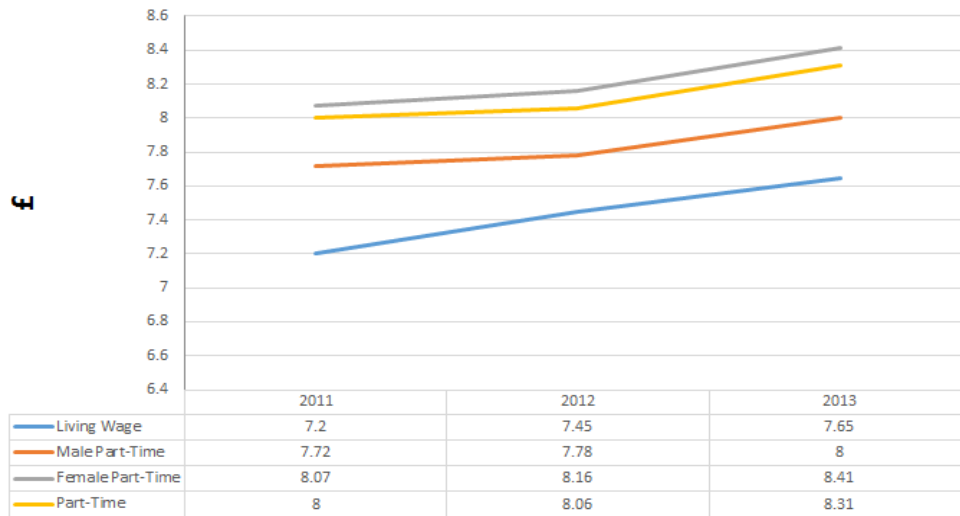
Peterborough - Part time median salary (£)



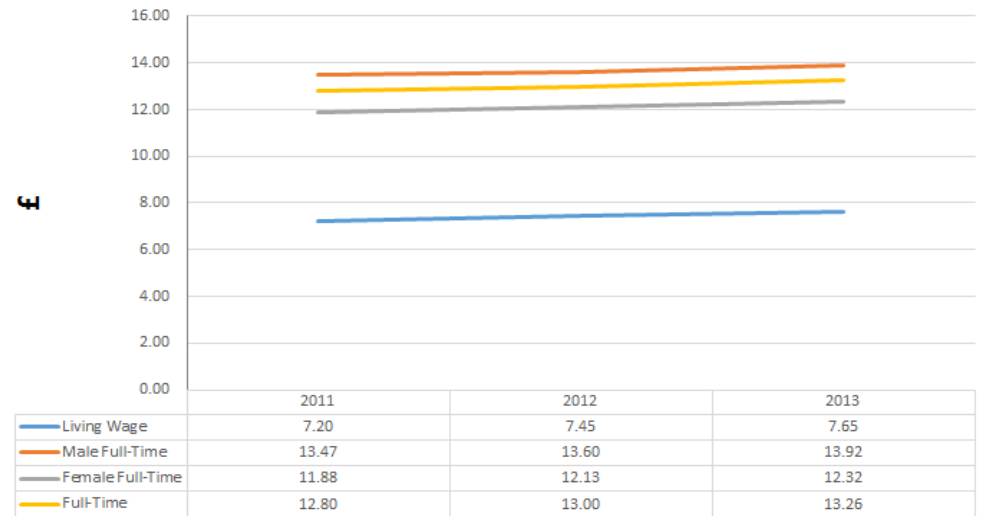
Peterborough - Full time median salary (£)



England - Part time median salary (£)



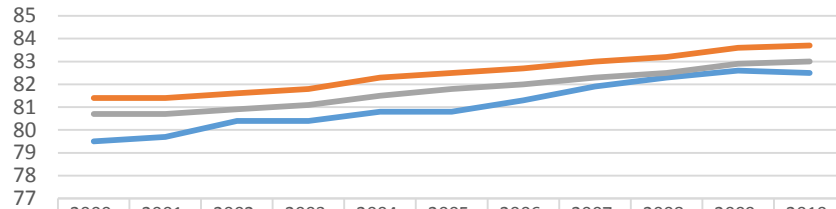
England - Full time median salary (£)



The living wage (not inclusive of London) is currently £7.65, the current minimum wage is £6.31, therefore, in Peterborough, part time males salary rs are significantly lower than the living wage, and broadly in line with the minimum wage. These graphs also show that Peterborough's hourly wages are lower than the region and country. as well as demonstrating that female part-time workers are paid in excess of their male counterparts and vice versa regarding full-time wages.

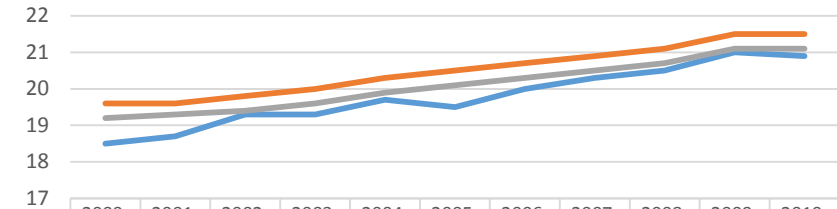
Health Issues

Female Life Expectancy at Birth



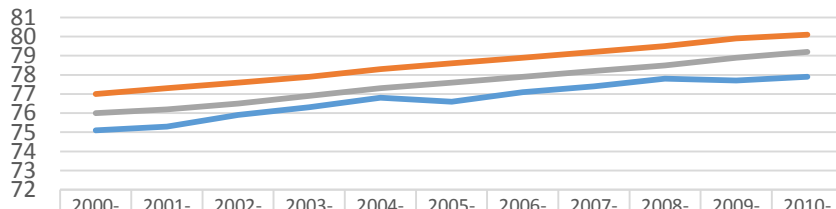
	2000-02	2001-03	2002-04	2003-05	2004-06	2005-07	2006-08	2007-09	2008-10	2009-11	2010-12
Peterborough	79.5	79.7	80.4	80.4	80.8	80.8	81.3	81.9	82.3	82.6	82.5
East of England	81.4	81.4	81.6	81.8	82.3	82.5	82.7	83.0	83.2	83.6	83.7
England	80.7	80.7	80.9	81.1	81.5	81.8	82	82.3	82.5	82.9	83

Female Life Expectancy at 65



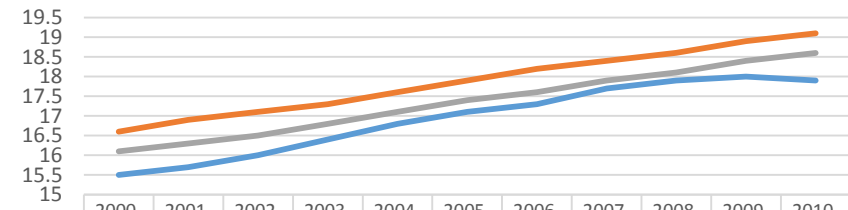
	2000-02	2001-03	2002-04	2003-05	2004-06	2005-07	2006-08	2007-09	2008-10	2009-11	2010-12
Peterborough	18.5	18.7	19.3	19.3	19.7	19.5	20	20.3	20.5	21	20.9
East of England	19.6	19.6	19.8	20.0	20.3	20.5	20.7	20.9	21.1	21.5	21.5
England	19.2	19.3	19.4	19.6	19.9	20.1	20.3	20.5	20.7	21.1	21.1

Male Life Expectancy at Birth



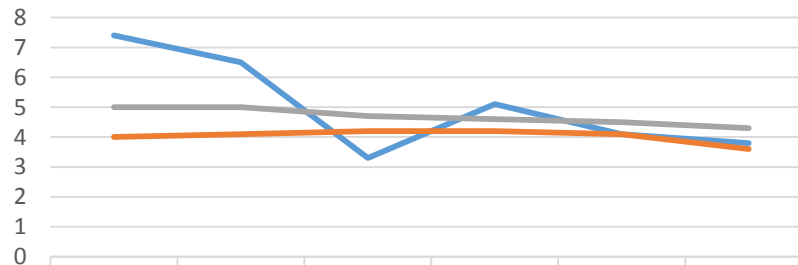
	2000-02	2001-03	2002-04	2003-05	2004-06	2005-07	2006-08	2007-09	2008-10	2009-11	2010-12
Peterborough	75.1	75.3	75.9	76.3	76.8	76.6	77.1	77.4	77.8	77.7	77.9
East of England	77.0	77.3	77.6	77.9	78.3	78.6	78.9	79.2	79.5	79.9	80.1
England	76	76.2	76.5	76.9	77.3	77.6	77.9	78.2	78.5	78.9	79.2

Male Life Expectancy at 65



	2000-02	2001-03	2002-04	2003-05	2004-06	2005-07	2006-08	2007-09	2008-10	2009-11	2010-12
Peterborough	15.5	15.7	16	16.4	16.8	17.1	17.3	17.7	17.9	18	17.9
East of England	16.6	16.9	17.1	17.3	17.6	17.9	18.2	18.4	18.6	18.9	19.1
England	16.1	16.3	16.5	16.8	17.1	17.4	17.6	17.9	18.1	18.4	18.6

Infant Mortality, Rate per 1,000 Live Births



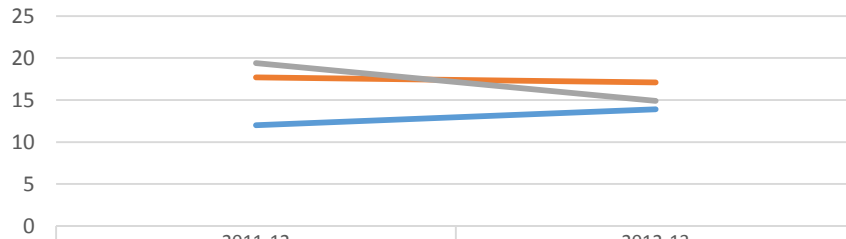
	2005	2006	2007	2008	2009	2010
Peterborough	7.4	6.5	3.3	5.1	4.1	3.8
East	4	4.1	4.2	4.2	4.1	3.6
England and Wales	5.0	5.0	4.7	4.6	4.5	4.3

The above four graphs show that life expectancy in Peterborough, regardless of sex and stage of life, is below the region and country, although is improving at a similar rate.

The graph to the left shows that infant mortality has declined from significantly above the regional and national rates in 2005 to in line with both in 2010.

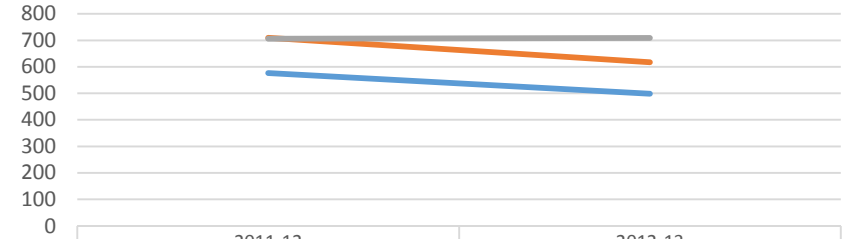
Health Issues

Care Home Admission (18-64), Rate per 100,000 Residents



	2011-12	2012-13
Peterborough	12	13.9
East of England	17.7	17.1
England	19.4	14.9

Care Home Admission (65+), Rate per 100,000 Residents

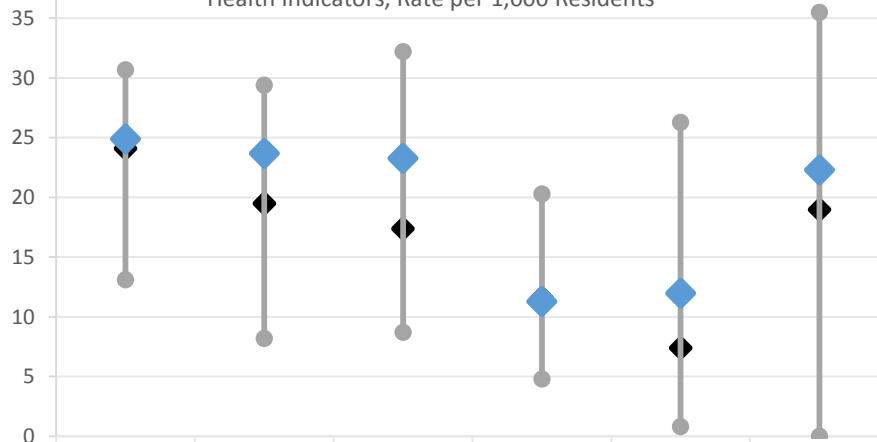


	2011-12	2012-13
Peterborough	576.5	498.5
East of England	709.5	617.2
England	705.9	708.8

The above two graphs show that Peterborough has less care home admissions per 100,000 people than the region or country, although the trend for the ages of 18-64 suggests Peterborough will soon exceed both in this area.

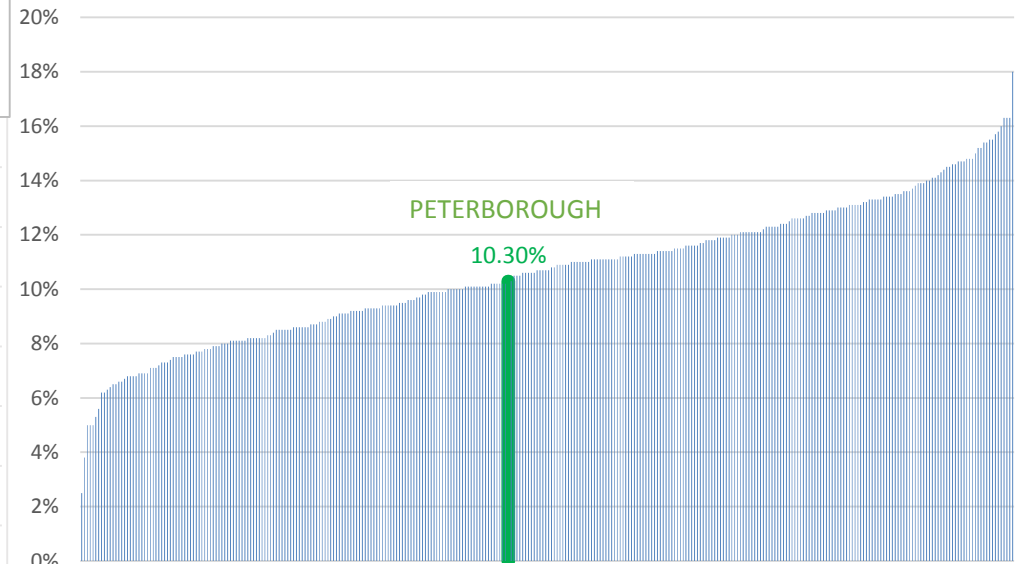
This graph below shows the range of various health indicators per 1,000 residents with the national average and Peterborough's score superimposed. These show that Peterborough exceeds the national average in all but one indicator, that of Depression 18+.

Health Indicators, Rate per 1,000 Residents



	Adult Obesity	Adult Smoking	Alcohol Related Harm	Depression 18+	Drug Misuse	Excess Winter Deaths
◆ National Average	24.1	19.5	17.4	11.6	7.4	19
● National High	30.7	29.4	32.2	20.3	26.3	35.5
● National Low	13.1	8.2	8.7	4.8	0.8	0
◆ Peterborough	24.9	23.7	23.3	11.3	12	22.29832572

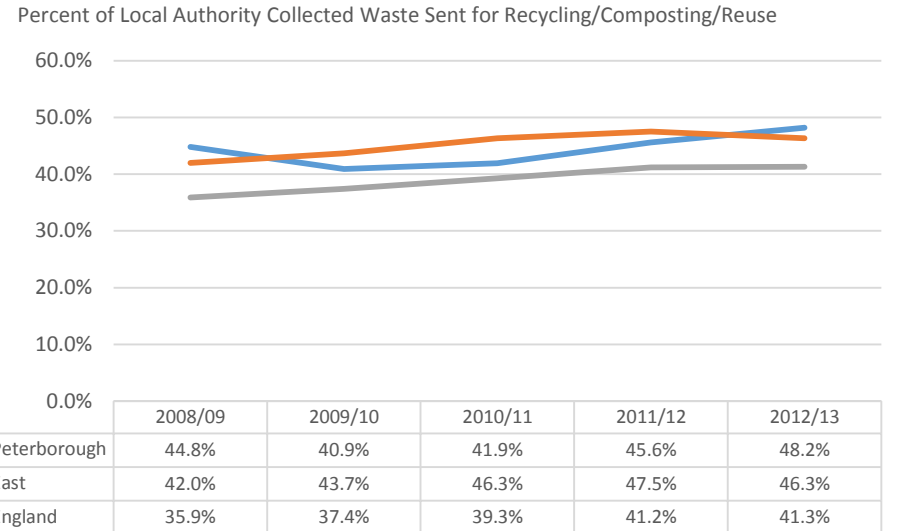
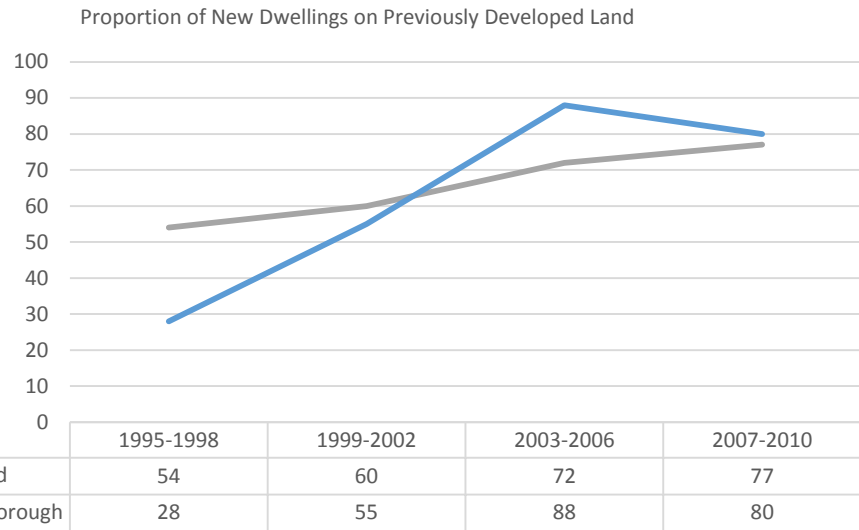
Percentage of Household's Experiencing Fuel Poverty by Local Authority



- Peterborough's rate of fuel poverty is 10.3%, better than the median of all comparable English local authorities of 10.7%. This places Peterborough 150th out of 326 local authorities with a percentile of 46%.

- There is a significant range in households experiencing fuel poverty in Peterborough's 104 LSOAs. The highest was 35.8% in one of Central's 6 LSOAs which accounted for 177 households, while the lowest was 3.1% in one of Orton Waterville's 5 LSOAs which accounted for 23 households. Across the 104 LSOAs

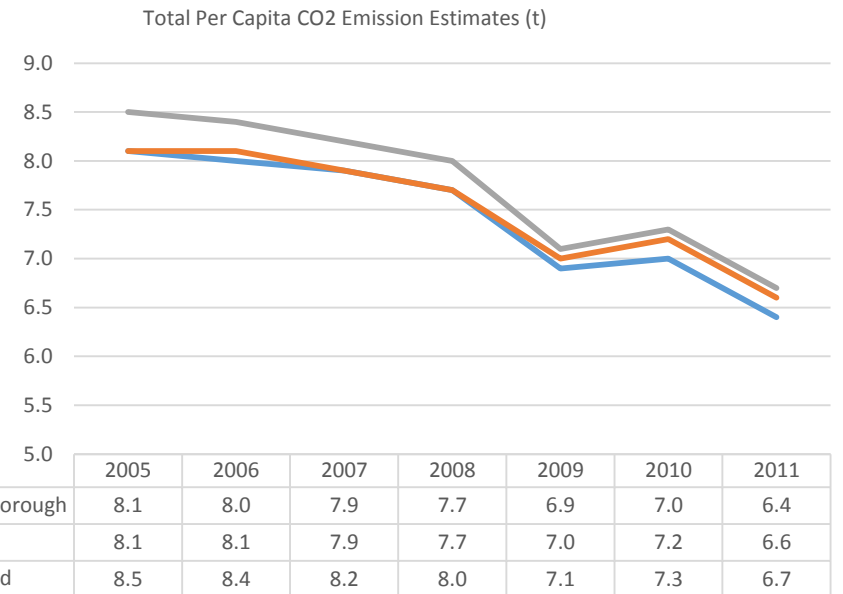
Rural Communities



This graph shows that in recent years Peterborough has exceeded the country regarding the percentage of



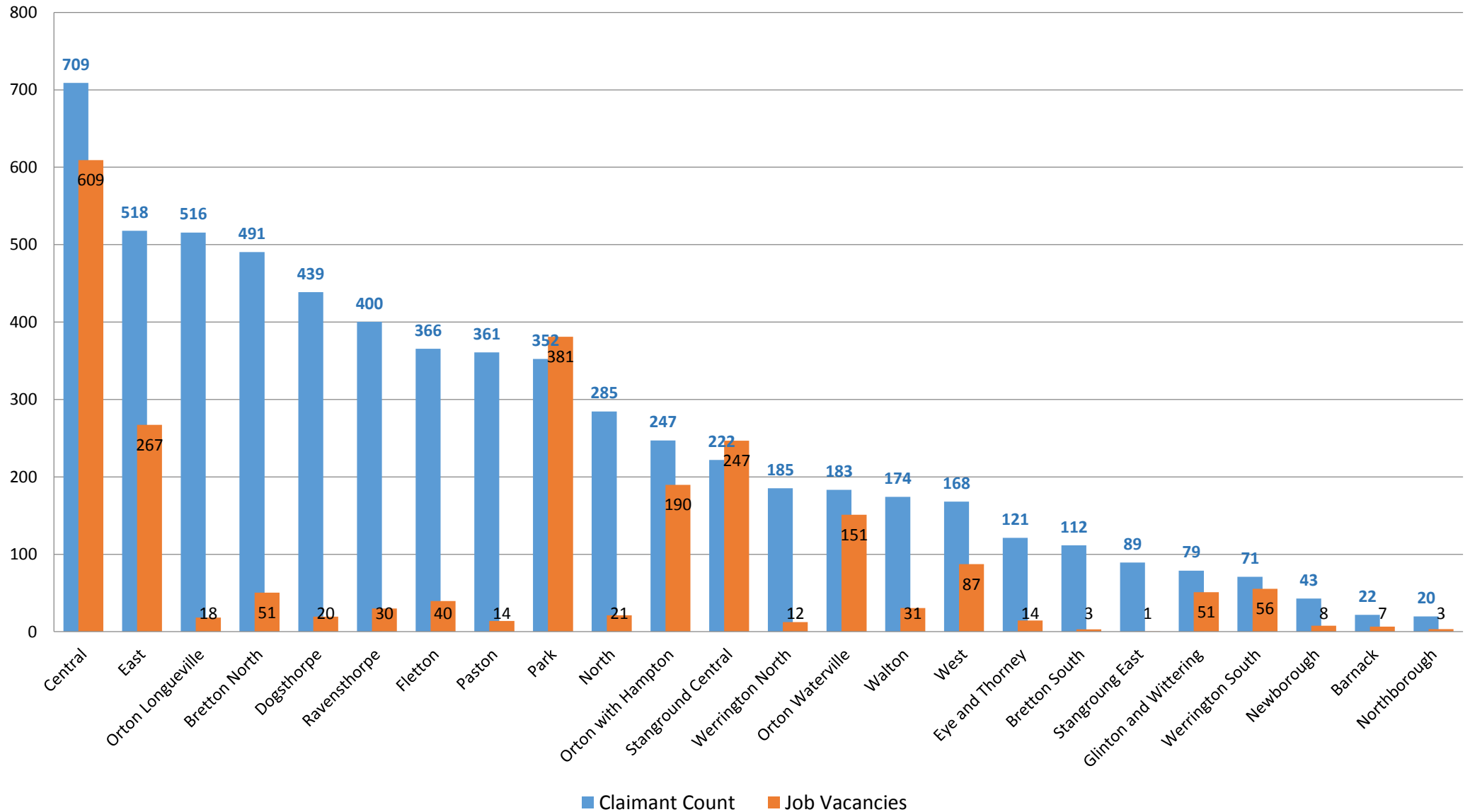
While the percent of green space land appears to have increased at both a regional and national level,



The above two graphs show that Peterborough is in line with the region and country regarding recycling, composting and reusing collected waste and also CO2 emissions.

Rural Communities

Average number of monthly claimant counts and Job vacancies by Ward (Dec2011 - Nov 2012).



There are clear disproportions regarding the volume of claimants by ward when compared to job vacancies by ward, this is likely to affect those living in rural communities as well as those less mobile claimants ability to easily commute to work without rely upon transport.

This page is intentionally left blank